

# 1-Channel Digital Temperature Indicators



## T3 / T4 Series CATALOG

**For your safety, read and follow the considerations written in the instruction manual, other manuals and Autonics website.**

The specifications, dimensions, etc are subject to change without notice for product improvement. Some models may be discontinued without notice.

### Features

- Various control output options : relay, SSR drive, current
- 2 independent set points and control outputs for heating and cooling control (T4LP)
- Various sizes (W48×H48, W48×H96, W72×H72, W96×H96 mm)

### Ordering Information

This is only for reference, the actual product does not support all combinations. For selecting the specified model, follow the Autonics website .

**T ① ② I - N ③ N ④ C - N**

**① Digit**

3: 3 digit  
4: 4 digit

**③ Power supply**

X: 12-24 VDC≐  
4: 100-240 VAC~ 50/60 Hz

**② Size**

N: DIN W 48 × H 24 mm  
Y: DIN W 72 × H 36 mm  
W: DIN W 96 × H 48 mm  
S: DIN W 48 × H 48 mm (8 pin plug type)  
M: DIN W 72 × H 72 mm  
H: DIN W 48 × H 96 mm  
L: DIN W 96 × H 96 mm

**④ Input type and using range**

PN	Input	Using range	T3NI	T4YI T4WI	T3SI	T3HI	T4MI T4LI
K2	Thermo-couple	K(CA)	0 to 200 °C	○	-	-	-
K4			0 to 400 °C	○	-	-	-
K8			0 to 800 °C	○	-	○	-
KA			0 to 999 °C	○	-	-	○
KC			0 to 1200 °C	-	○	-	-
J2	J(IC)	J(IC)	0 to 200 °C	○	-	-	-
J4			0 to 400 °C	○	-	○	○
J5			0 to 500 °C	○	○	-	-
RF	R(PR)	600 to 1600 °C	-	-	-	○	
P0	RTD	DPT100Ω	-99.9 to 99.9 °C	○	-	-	-
P0			-99.9 to 199.9 °C	-	○	-	○
P0			-99 to 199 °C	-	-	-	○
P1			0 to 99.9 °C	○	-	○	-
P2			0 to 200 °C	○	-	-	-
P4			0 to 400 °C	○	○	-	○

• Contact us for temperature unit °F model.

### Product Components

- Product (+ bracket)
- Instruction manual
- [T4YI] Product, bracket × 2

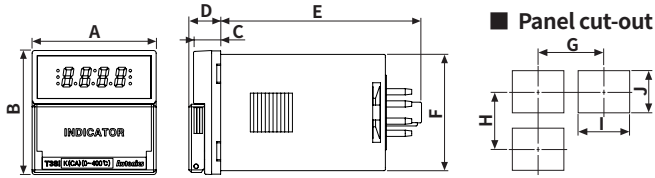
### Specifications

Series	T3, T4 Series
<b>Power supply</b>	100 - 240 VAC~ 50/60 Hz ±10% (T3NI: 12 - 24 VDC≐ ±10%)
<b>Power consumption</b>	≤ 5 VA (T3NI: ≤ 1 W)
<b>Input specification</b>	Refer to 'Ordering Information: Input type and using range'.
<b>Display accuracy<sup>01)</sup></b>	• At room temperature (23 °C ±5 °C): (PV ±0.5% or ±1 °C higher one) ±1 digit • Out of room temperature range: (PV ±0.5% or ±2 °C higher one) ±1 digit
<b>Display type</b>	7 Segment (red), LED type
<b>Dielectric strength</b>	Between input terminal and power terminal: 2,000 VAC~ 50/60 Hz for 1 min
<b>Vibration</b>	0.75 mm amplitude at frequency of 10 to 55 Hz (for 1 min) in each X, Y, Z direction for 2 hours
<b>Insulation resistance</b>	≥ 100 MΩ (500 VDC≐ megger)
<b>Noise immunity</b>	±2 kV square shaped noise (pulse width 1 μs) by noise simulator R-phase, S-phase
<b>Ambient temperature</b>	-10 to 50 °C, storage: -20 to 60 °C (no freezing or condensation)
<b>Ambient humidity</b>	35 to 85%RH, storage: 35 to 85%RH (no freezing or condensation)
<b>Accessory</b>	Bracket
<b>Approval</b>	ERC
<b>Unit weight (packaged)</b>	<ul style="list-style-type: none"> <li>• T3NI: ≈ 25 g (≈ 48 g)</li> <li>• T4YI: ≈ 123 g (≈ 181 g)</li> <li>• T4WI: ≈ 140 g (≈ 231 g)</li> <li>• T3SI: ≈ 80 g (≈ 120 g)</li> <li>• T3HI: ≈ 137 g (≈ 203 g)</li> <li>• T4MI: ≈ 137 g (≈ 202 g)</li> <li>• T4LI: ≈ 185 g (≈ 274 g)</li> </ul>

01) In case of T3NI, T3SI Series and the decimal point display models  
At room temperature (23 °C ±5 °C): (PV ±0.5% or ±2 °C higher one) ±1 digit  
Out of room temperature range: (PV ±0.5% or ±3 °C higher one) ±1 digit

## Dimensions

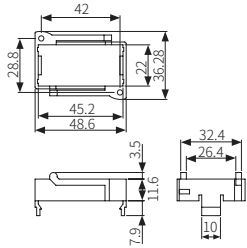
- Unit: mm, For the detailed drawings, follow the Autonics website.
- Below is based on T3SI Series.



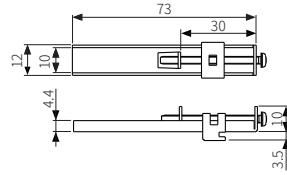
	Body						Panel cut-out			
	A	B	C	D	E	F	G	H	I	J
<b>T3NI</b>	48	24	4	-	48	21	≥ 55	≥ 37	45 <sup>+0.5</sup> <sub>0</sub>	22.2 <sup>+0.3</sup> <sub>0</sub>
<b>T4YI</b>	72	36	7	-	93	30	≥ 91	≥ 40	68 <sup>+0.7</sup> <sub>0</sub>	31.5 <sup>+0.6</sup> <sub>0</sub>
<b>T4WI</b>	96	48	12	-	100	45	≥ 116	≥ 52	92 <sup>+0.8</sup> <sub>0</sub>	45 <sup>+0.6</sup> <sub>0</sub>
<b>T3SI</b>	48	48	10.5	12.3	77.8	□45	≥ 65	≥ 65	45 <sup>+0.5</sup> <sub>0</sub>	45 <sup>+0.5</sup> <sub>0</sub>
<b>T3HI</b>	48	96	13	-	70	91.5	≥ 65	≥ 115	45 <sup>+0.6</sup> <sub>0</sub>	92 <sup>+0.8</sup> <sub>0</sub>
<b>T4MI</b>	72	72	11.8	14.3	75	□67.5	≥ 90	≥ 90	68 <sup>+0.7</sup> <sub>0</sub>	68 <sup>+0.7</sup> <sub>0</sub>
<b>T4LI</b>	96	96	12.5	-	70	□91.5	≥ 115	≥ 115	92 <sup>+0.8</sup> <sub>0</sub>	92 <sup>+0.8</sup> <sub>0</sub>

## Bracket

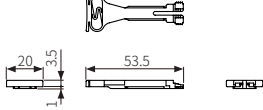
### T3NI



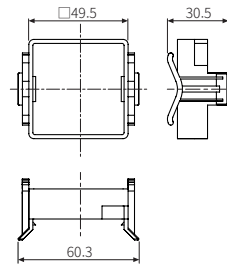
### T4YI



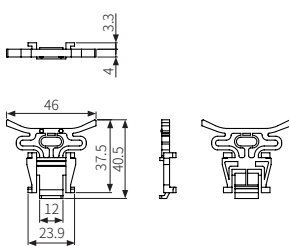
### T4WI



### T3SI



### T3HI/T4MI/T4LI



## Sold Separately

- 8 pin socket: PG-8, PS-8 (N)
- Terminal protection cover: RMA / RHA / RLA Cover